



SKIMMER UNIK

DESIGNED PERFECTLY.
INTEGRATED EVENLY.

SKIMMER UNIK

AstralPool Skimmer Unik is the perfect design solution to integrate harmoniously into the pool and its surroundings. It provides flexible choice of colors for all visible parts and enables fully integrated top cover. It also offers quiet operation as well as easy maintenance.

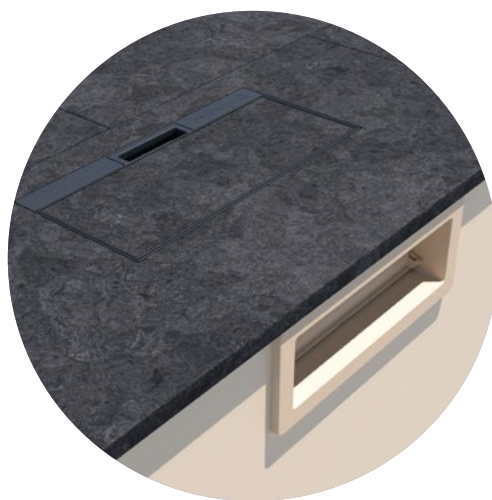


FULLY INTEGRATED

Skimmer Unik blends harmoniously with the pool and its surroundings thanks to its fully integrated top cover as well as the variety of colors and finishing of the embellishers.

The design of its top cover makes it possible to customize it with a tile or slab of the same material as the pool surround.

Thanks to its lower height of water level from pool floor - 5.5 cm - Skimmer Unik offers an infinity pool effect.

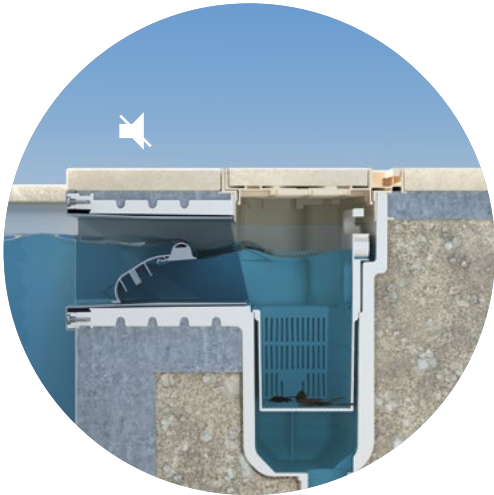


5 YEAR
WARRANTY



APPROVED
QUALITY
APPROVED

Illustration of potential configurations:
Top covers and embellishers fully integrated with the pool and its surroundings.



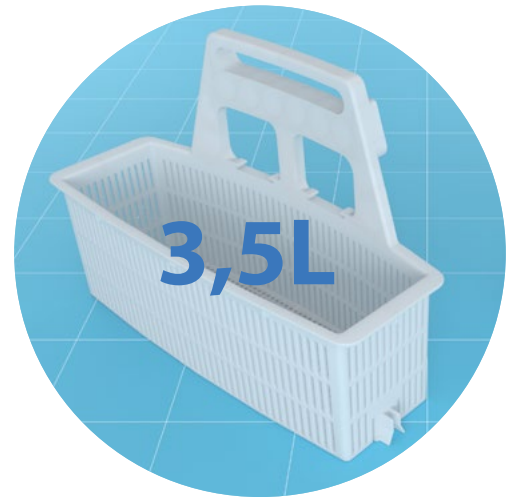
QUIET OPERATION

Skimmer Unik brings whisper-quiet functioning thanks to its exclusive curved floater solution (patent pending).

EASY MAINTENANCE

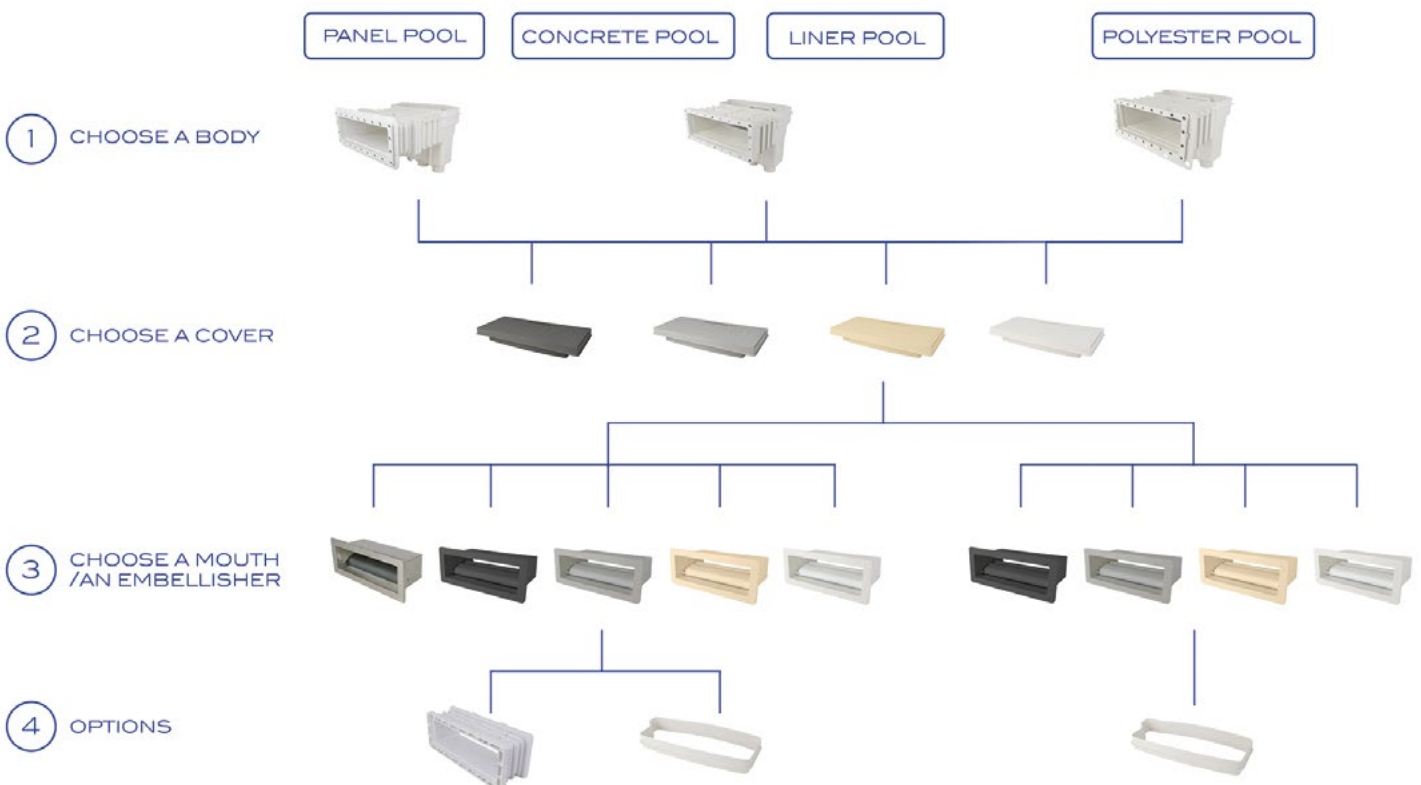
Skimmer Unik eases maintenance thanks to its larger basket capacity (3.5L)* and its easy retrieval without touching the water.

*vs AstralPool 2,8L traditional Skimmer basket.




MAXIMUM FLEXIBILITY COMPOSING THE SKIMMER

The Skimmer Unik allows maximum flexibility thanks to the possible colors' combination of the visible parts.






SELECTION TABLE


Choose amongst the components according to your requirements.


①	SKIMMER BODY - ABS WHITE COLOR	CODE
	Skimmer body CONCRETE POOL WITHOUT INSERTS	74830
	Skimmer body CONCRETE POOL WITH INSERTS	74831
	Skimmer body LINER POOL WITHOUT INSERTS*	74832
	Skimmer body LINER POOL WITH INSERTS*	74833
	Skimmer body PANEL POOL WITHOUT INSERTS	74834
	Skimmer body PANEL POOL WITH INSERTS	74835
	Skimmer body POLYESTER POOL 6° WITHOUT INSERTS	74836
	Skimmer body POLYESTER POOL 6° WITH INSERTS	74837

* Delivered with 2 sets of screws DIN 7982 A4 5.5x25 and 32

②	SKIMMER COVERS - ABS	CODE
	Skimmer cover WHITE	74838
	Skimmer cover BEIGE	74838CL090
	Skimmer cover GREY	74838CL129
	Skimmer cover ANTHRACITE	74838CL144

③	SKIMMER MOUTH/EMBELLISHER	CODE
3.1 - FOR CONCRETE, LINER AND PANEL POOLS		
	Standard ABS WHITE	74839
	Standard ABS BEIGE	74839CL090
	Standard ABS GREY	74839CL129
	Standard ABS ANTHRACITE	74839CL144
	Standard STAINLESS STEEL A316-L	74806
3.2 - FOR POLYESTER POOLS		
	6° Mouth - WHITE	74840
	6° Mouth - BEIGE	74840CL090
	6° Mouth - GREY	74840CL129
	6° Mouth - ANTHRACITE	74840CL144

④	SKIMMER OPTIONS - VALID FOR THE SKIMMER PARTS SOLD SEPARATELY OR THE FULL SETS	CODE
	EXTENDED Mouth Standard WITHOUT INSERTS	74841
	EXTENDED Mouth Standard WITH INSERTS	74842
	EXTENDED Mouth POLYESTER POOL 6° WITHOUT INSERTS	74843
	EXTENDED Mouth POLYESTER POOL 6° WITH INSERTS	74844
	COVER EXTENSION RING	74845

KIT SKIMMER UNIK ABS COLOR WHITE: BODY + COVER + EMBELLISHER	CODE	
	Skimmer UNIK CONCRETE POOL WITHOUT INSERTS	74457
	Skimmer UNIK CONCRETE POOL WITH INSERTS	74458
	Skimmer UNIK LINER POOL WITHOUT INSERTS	74459
	Skimmer UNIK LINER POOL WITH INSERTS	74460
	Skimmer UNIK PANEL POOL WITHOUT INSERTS	74461
	Skimmer UNIK PANEL POOL WITH INSERTS	74462
	Skimmer UNIK POLYESTER POOL 6° WITHOUT INSERTS	74463
	Skimmer UNIK POLYESTER POOL 6° WITH INSERTS	74464

DIMENSIONS (MM)

